

PRODUCT DATA SHEET



water
treatment
services

Pureline CG Series ClO₂ Generator

Chemistry to make water work

OVERVIEW

The CG series generator is a two-chemical system using PureMax (a proprietary blend of chlorate and reducing agents) and sulfuric acid to generate chlorine dioxide at over 95% efficiency. This process is the most economical way to produce medium to large amounts of ClO₂ (9 to 1800 kg/day). The CG generator produces ClO₂ on demand, safely, efficiently and without the need for additional storage or delivery pumps (up to 205 kPa delivery without the need for a booster pump).

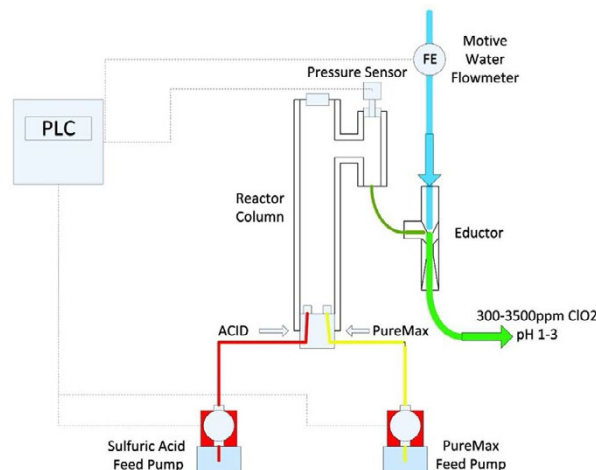
The CG series has very few moving parts, thus it is very low maintenance and reliable even under extremely harsh conditions. The system has built in flow pacing capability (with the use of an external flowmeter signal), production tracking and communications allowing remote system monitoring. The system is built with redundant safety interlocks and all operations are performed within the generator cabinet providing a safe and clean operating system.

- 95%+ Efficiency
- On demand generation
- Large production range (20:1 turn down)
- Expert engineering and technical support
- Few moving parts, Low Maintenance, High Reliability
- Low operating cost – enhanced ROI



STANDARD SPECIFICATIONS

Parameter	Units	PureLine CG Model					
		CG-10	CG-20	CG-40	CG-80	CG-160	CG-200
ClO ₂ Output Capacity	kg/hr	4.54	9.07	18.14	36.29	72.57	90.71
Electricity requirement		220 VAC, 1PH, 30A			220 VAC, 1PH, 60A		
Inlet water		Type: 20 Mesh Filter Water (Process or Potable with low Ba+, Sr+ or Ca+) Pressure: 1035kPa with <35kPa fluctuation. Booster Pump Available (recommended)					
PLC & HMI		Allen Bradley PLC and Colour Touch Screen					
Chemical usage		PureMax - 4.2kg per 1kg of ClO ₂ required and 78% sulfuric acid - 4.9kg per kg of ClO ₂ required					
Cabinet		White polypropylene					
Dimensions	mm	1327 x 1918 x 718					
Weight	kg	204					
Co-products		Excess H ₂ SO ₄ (1:1 per kg of ClO ₂ product pH 1-3) and Oxygen gas					
HS Code		8421.21.000					



JUL 2023

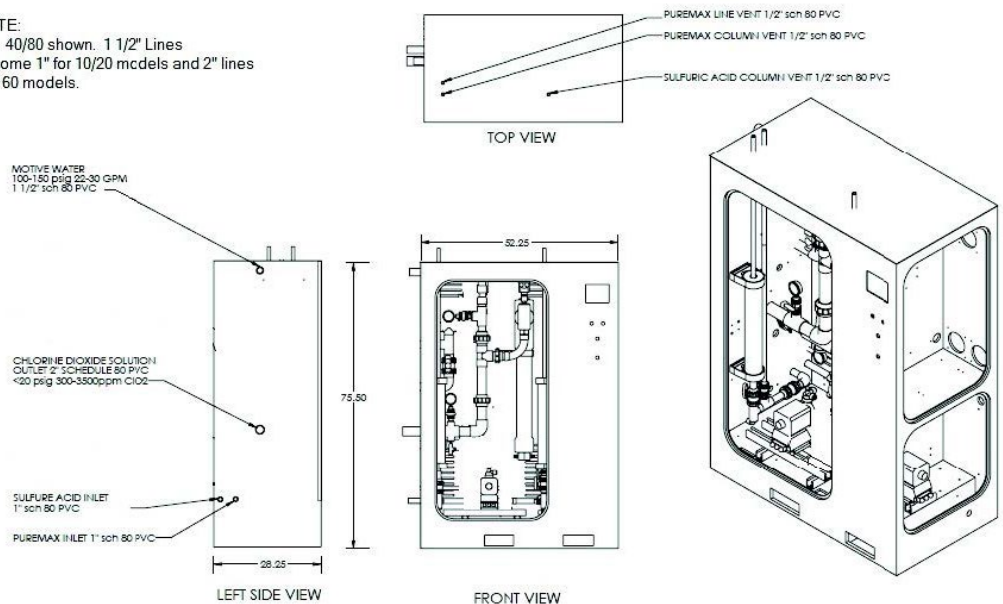
STANDARD INCLUSIONS + OPTIONS

✓ = Standard Supply ○ = Optional Supply

Equipment	CG Model					
	CG-10	CG-20	CG-40	CG-80	CG-160	CG-200
Self contained unit	✓	✓	✓	✓	✓	✓
CA Concentrated Acid package	○	○	○	○	○	○
Input chemical storage tanks	○	○	○	○	○	○
Produced ClO2 break tank	○	○	○	○	○	○

Instrumentation & Controls	
Control Panel compliant with AS/NZS 3000, IP55	✓
PLC control system with HMI touch screen	✓
Full redundancy PLC control system	○
Flow pacing capability utilising external flowmeter signal)	✓
Water flow meter	○
Production tracking and remote system monitoring	○
PCA-970 Chlorine Dioxide Residual Monitoring System	○

NOTE:
CG 40/80 shown. 1 1/2" Lines
become 1" for 10/20 models and 2" lines
for 160 models.



MODEL SELECTION

- 20** Capacity – typical 4.54 kg/h
- 40** Capacity – typical 9.07 kg/h
- 60** Capacity – typical 18.14 kg/h
- 100** Capacity – typical 36.29 kg/h
- 160** Capacity – typical 72.57 kg/h
- 200** Capacity – typical 90.71 kg/h

- X** Concentrated Acid Package - without
- C** Concentrated Acid Package- included
- X** External chemical storage - without
- E** External chemical storage - included
- X** Sludge Feed Pump – without
- F** Sludge Feed Pump – included
- X** Specification – standard
- A** Specification – custom

CG- _ _ _ _ _

NEED A QUOTE?

**COMPLETE THIS TABLE
AND EMAIL TO...**

enquiry@watertreat.com.au

Disclaimer: WTS is continuously updating and improving its products and services, so please contact us for more detailed information or to confirm specifications. WTS takes no responsibility for any errors resulting from the use of information contained within this document.

JUL 2023